

PORTFOLIO

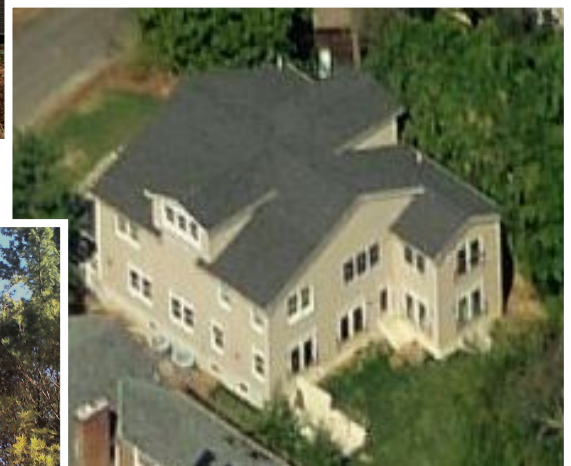
- This is a sample of our work since 2004 shown via Maps and PDF Drawings – just click the [Links](#)
- ALL of our clients request privacy... we rarely photograph their homes upon completion
- We invite you to select those projects closest to you and drive by to see our work



Design/Build Luxury Single Family Home (SFH) w/ Insulating Concrete Form Walls



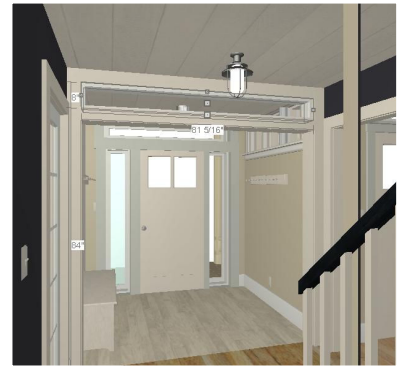
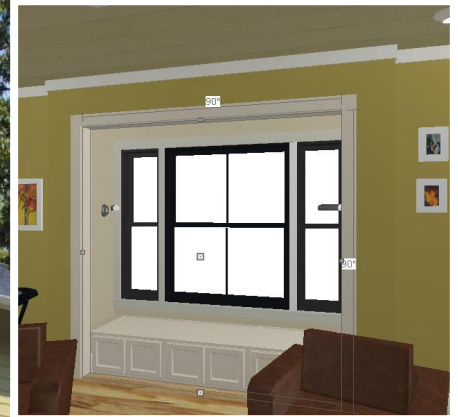
Bethesda, MD




[BING MAP](#)
[GOOGLE MAP](#)
[YouTube](#)
[DRAWINGS](#) – 5,400 sq ft Inc. basement

Please [Email](#) or call 410-514-6222 for an appointment at our Studio in [Savage Mill](#)
 Or a visit to our production facility to see how we build High Performance

Custom Ultra-Green SFH with Solar PV, Geothermal Heat Pump



7211 Flower Ave
Takoma Park, MD 20912

 [BING MAP](#)
[GOOGLE MAP](#)
[DRAWINGS](#) – 3,695 sq ft Inc basement



Please [Email](#) or call 410-514-6222 for an appointment at our Studio in [Savage Mill](#)
Or a visit to our production facility to see how we build High Performance

TRUTH IN BUILDING™

Custom SFH with Solar Power & Double Insulated Walls



1819 Simms Ln
Hanover, MD 21076



[BGE News](#)
[GOOGLE MAPS](#)
[BING MAPS](#)
[DRAWINGS](#) – 3,790SQ FT Inc basement



2nd Floor Addition w/ Closed-Cell Foam Walls



976 Annapolis Rd
Gambrills, MD 21054

[GOOGLE MAPS](#) (before addition)
[GOOGLE MAPS](#) (after addition)
[DRAWINGS](#) – 992 SQ FT



Please [Email](#) or call 410-514-6222 for an appointment at our Studio in [Savage Mill](#)
Or a visit to our production facility to see how we build High Performance

T R U T H I N B U I L D I N G ™

Custom SFH, Basement & Garage w/ Geothermal Heat, Super Insulated Walls



1291 Streaker Rd
Sykesville, MD 21784



[BING MAPS](#)
[DRAWINGS](#) – 4,766 sq ft Inc finished basement



Please [Email](#) or call 410-514-6222 for an appointment at our Studio in [Savage Mill](#)
Or a visit to our production facility to see how we build High Performance

TRUTH IN BUILDING™

Custom Waterfront SFH & Garage with Geothermal Heatpump, Solar Power



HERS 48!



5208 Brooks Rd
Woolford, MD 21677



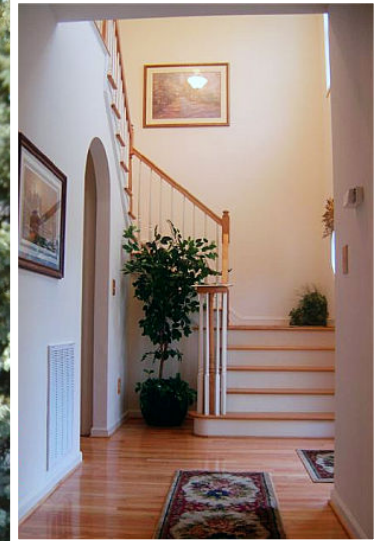
[GOOGLE MAPS](#)
[DRAWINGS](#) – 5,769 sq ft Inc basement



Please [Email](#) or call 410-514-6222 for an appointment at our Studio in [Savage Mill](#)
Or a visit to our production facility to see how we build High Performance

T R U T H I N B U I L D I N G ™

Annapolis Custom Colonial w/ Garage



109 Dewey Dr
Annapolis, MD 21401

[GOOGLE MAPS](#)

[BING MAPS](#)

[DRAWINGS](#) – 2,280 sq ft plus basement



Custom SFH “Super” Energy Star



INSULATED ATTIC LADDER COVER

RADIANT BARRIER BASEMENT WALL

AIR-SEALING SPRAY FOAM



6604 Melrose Ave
Elkridge, MD 21075

[GOOGLE MAPS](#)

[YouTube](#) – *Time Lapse Video*

[DRAWINGS](#) – 2,136 sq ft Inc basement




Please [Email](#) or call 410-514-6222 for an appointment at our Studio in [Savage Mill](#)
Or a visit to our production facility to see how we build High Performance

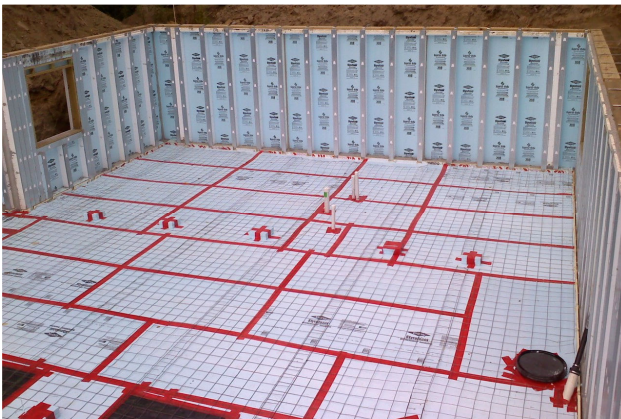
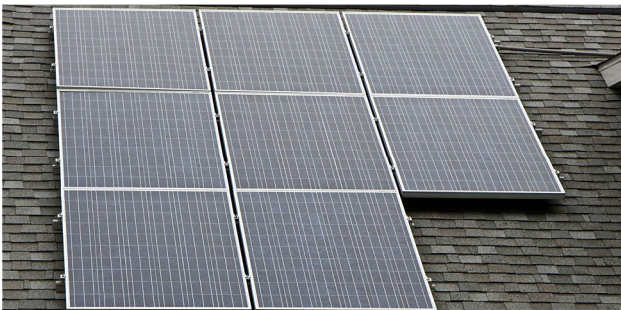
TRUTH IN BUILDING™

Custom Ultra-Green SFH with Solar PV, Geothermal Heat Pump



11211 Upton Dr
Kensington, MD 20895

 [GOOGLE MAP](#) (overhead)
[GOOGLE MAP](#) (street view)
[DRAWINGS](#) – 4,204 sq ft Inc basement



Please [Email](#) or call 410-514-6222 for an appointment at our Studio in [Savage Mill](#)
Or a visit to our production facility to see how we build High Performance

TRUTH IN BUILDING™

2nd Floor ADDITION – Harford County



2500 Pinehurst Ave
Forest Hill, MD 21050



[GOOGLE MAPS \(street view\)](#)
[DRAWINGS](#) – 1,423 SQ FT

Custom SFH with Super Walls, Solar Thermal (hot water) & Energy Star



2702 Baldwin Mill Rd
Baldwin, MD 21013



[GOOGLE MAPS](#)
[BING MAPS](#)
[DRAWINGS](#) – 5,197 sq ft Inc basement
[ENERGY STAR® CERTIFICATE](#)

Please [Email](#) or call 410-514-6222 for an appointment at our Studio in [Savage Mill](#)
Or a visit to our production facility to see how we build High Performance

T R U T H I N B U I L D I N G ™

Custom SFH with ICF (Styrofoam) basement walls



1533 Old Tower Rd
Aberdeen, MD 21001



[DRAWINGS](#)

Church & Community Center w/ Precast Walls & Super Insulation (Under construction 2014)



[YouTube Time Lapse Video](#) – Building Erection

[Time Lapse Video](#) – BASEMENT WALLS

[Time Lapse Video](#) – STEEL ERECTION

[DRAWINGS](#)

9,000SF

4216 Howard Rd

Beltsville, MD 20705

Please [Email](#) or call 410-514-6222 for an appointment at our Studio in [Savage Mill](#)

Or a visit to our production facility to see how we build High Performance

TRUTH IN BUILDING™

Custom SFH on basement fixed-budget "fire/insurance replacement home"



15519 Brandywine Rd
Brandywine, MD 20613



 [BING MAPS](#)
[DRAWINGS](#)

New Energy Star Custom SFH on basement w/ 2-Car Garage



7621 Chapman Rd
Kingsville, MD 21087

 [GOOGLE MAPS](#)
[DRAWINGS](#)



Please [Email](#) or call 410-514-6222 for an appointment at our Studio in [Savage Mill](#)
Or a visit to our production facility to see how we build High Performance

TRUTH IN BUILDING™



7974 Savage Guilford Rd., Jessup, MD

Maryland & D.C.
Tour of Solar and Green Homes

October 3 - 4, 2015

11am to 5pm



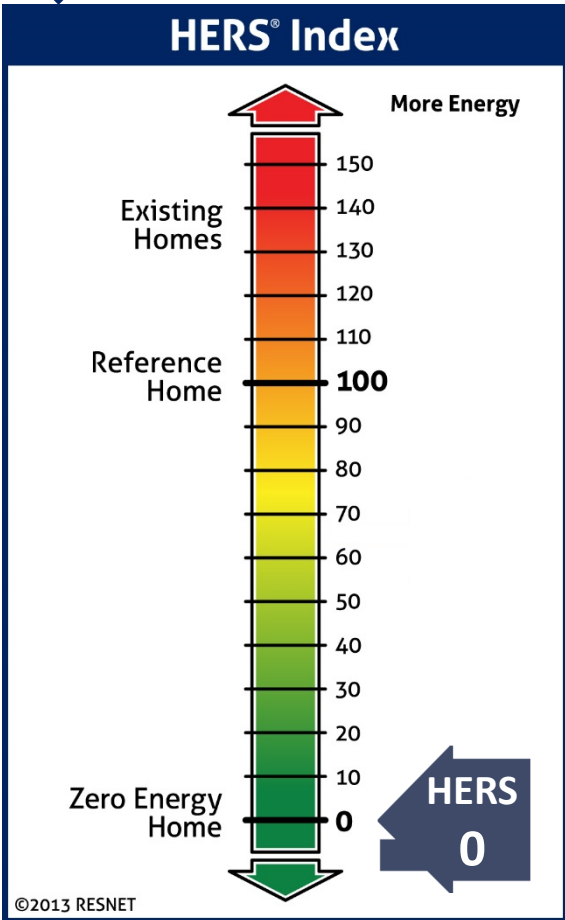
DIRECTIONS From intersection of Rt. 1 and Rt 32 – go north on Rt. 1 to Guilford Road ~.4 miles. Turn left onto Guilford Rd. Go ~.5 miles to Vollmerhausen Rd. Turn left on Vollmerhausen. Go ~.6 miles to Savage Guilford Rd. Turn right. Go ~.3 miles. Home is on the left ~ 300 ft from the road. Driveway entrance is across from Drumbeat Court on the right.



ABOUT THE HOME A rare Zero Energy Home located in Jessup and built by Finish Werks Custom Builders, it combines super-insulation, great windows, high performance geothermal heat pump with Desuperheater water heating, and an 8.5kW PV array to attain a HERS Index of Zero. Co-designed by the owners and Finish Werks, this custom modular home is 2,108 sq ft (plus basement) and includes Age-In-Place features, modern amenities, upgrades and finishes, while qualifying for NGBS Gold, DOE Zero Energy Ready, and Energy Star for Homes certifications.

FINISH WERKS CUSTOM BUILDERS delivers high performance green homes, additions, and light commercial buildings.

HERS® Index



As a Design/Builder, in-house services include consulting on lot acquisition and development, custom building design and turnkey construction, with an emphasis on prefab/modular technology and eco-friendly building methods.

Performance options cover Energy Star to Zero Energy; our finishes & amenities span great value to luxury.

Our expertise and reputation are proven and discernable.

Our mission always: TRUTH IN BUILDING



410 . 514 . 6222
inquiry@finishwerks.com
FinishWerks.com
MHBR 7491



504 Gum Spring Road, Brunswick, MD

Maryland & D.C.
Tour of Solar and Green Homes

October 3 - 4, 2015

11am to 5pm



DIRECTIONS

From Frederick: 340 West, MD 17 Brunswick Exit, Take left off exit, follow MD 17/Souder Rd for 6 miles, Turn right onto East H Street, Take immediate first left on to Gum Spring Road. First Barn style house on left after you round the bend.

ABOUT THE HOME

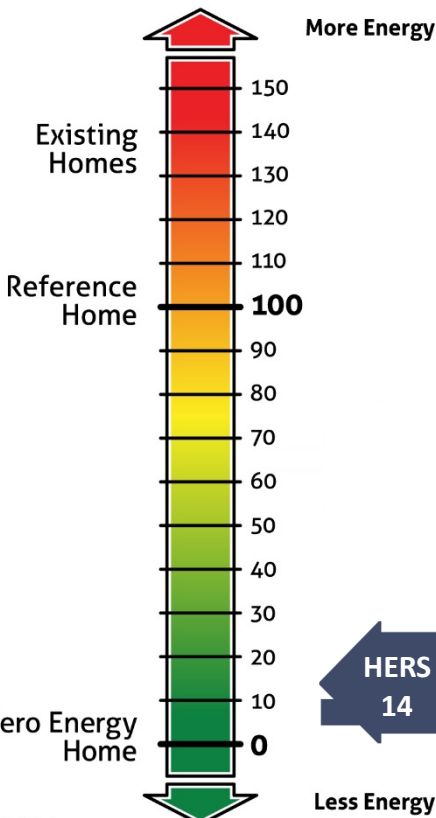
This 2,500 sq ft Near Zero, Modular Passive Solar home tucked on 3/4 acres in Brunswick, MD was complete in August 2015. Passive design by owners and built by Finish Werks Custom Builders of Savage, MD. Sixty percent more efficient than a house built to code, this house also qualifies for U.S Dept of Energy Zero Energy Ready Home program.

See the "Gum Spring Hollow Homestead" article on page 8.



FINISH WERKS CUSTOM BUILDERS delivers high performance green homes, additions, and light commercial buildings.

HERS® Index



As a Design/Builder, in-house services include consulting on lot acquisition and development, custom building design and turnkey construction, with an emphasis on prefab/modular technology and eco-friendly building methods.

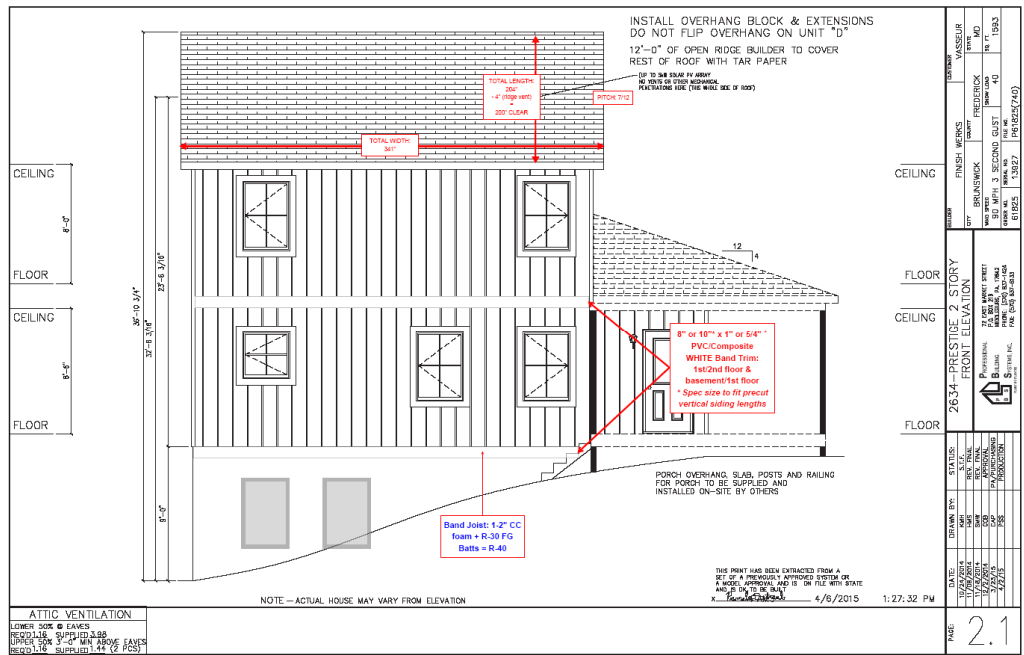
Performance options cover Energy Star to Zero Energy; our finishes & amenities span great value to luxury.

Our expertise and reputation are proven and discernable.

Our mission always: TRUTH IN BUILDING



410 . 514 . 6222
inquiry@finishwerks.com
FinishWerks.com
MHBR 7491



BUILD PARTNERS

Every High Performance Build requires a solid partner on the FW Team. The following subcontractors go the extra mile to ensure our high-end finishes and systems are properly designed in harmony with the rest of the home, and installed exactly as specified.

- Design/Build Firm: Finish Werks Custom Builders
- Prefabbed Modules: PROFESSIONAL BUILDING SYSTEMS (PBS Modular)
- Insulated Precast Basement: Ideal Building Systems
- Solar PV Array: Green Brilliance Solar
- HyPer Fujitsu Heat Pump: W. H. Metcalfe & Sons
- GE Geospring Hybrid Water Heater: Chris Walker
- Electric + Svc Connection: Todd Miller
- Fire Sprinkler System: Premier Fire Protection
- Insulators: Complete Home Solutions
- HERS Rater: Michael Sumpter, Pando Alliance

Our mission always: **TRUTH IN BUILDING**

410 . 514 . 6222
 inquiry@finishwerks.com
 FinishWerks.com
 MHBR 7491

